



DAE Pumps

Designed And Engineered Pumping Solutions

VISIT SITE NOW >>

Growler 1000

**6-in Hydraulic Dredge Pump
with 2 Side Agitators**



DAEPUMPS.COM

info@daepumps.com

(760) 821-8112

[VISIT SITE NOW >>](#)

GROWLER 1000 6-in Hydraulic Dredge Pump with 2 Side Agitators

The DAE Pumps Growler 1000 Hydraulic Dredge Pump with 2 Side Agitators is a highly durable and reliable dredge pump for transporting solids and a variety of other materials.

Built with two heavy-duty excavator-grade agitators. The industry's top dredge pump can move up to 15-95 cubic yards of solids per hour between 250 to 1320 GPM. The DAE Pumps Growler 1000 provides non-clogging suction power to excavate and pump some of the most challenging dredging situations.

The suction power of the mighty pump can handle solids up to 1.75-in moving up to 70% solids by weight through a 6-in discharge.



6-Inch
Pump



250 - 1320
GPM



2 Side
Agitators



Solids
Handling
up to 1.75 in



Up to 70%
Solids by
Weight



Highly
Durable
Abrasion
Resistant



Over 200 Ft
Head



Interchangeable
Hard Tooth
Cutter Heads



Robust Motor
for Strong
Torque

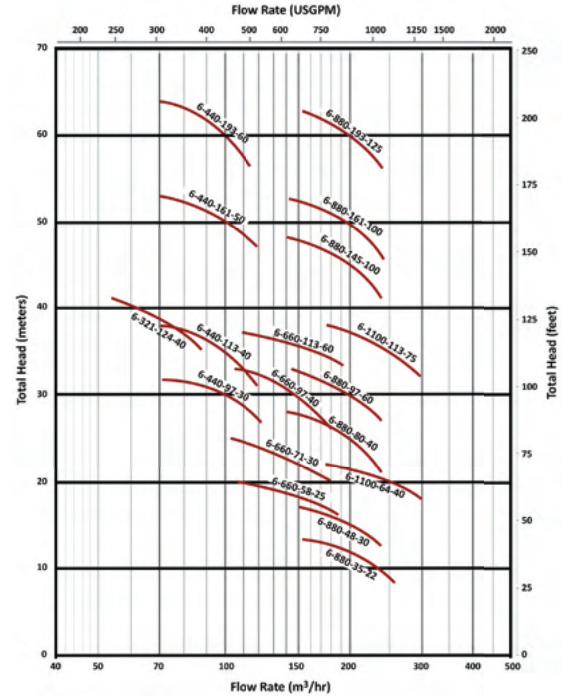
[VISIT SITE NOW >>](#)

VISIT SITE NOW >>

6-in Growler 1000 Pump Models

Model	GPM	Head (Ft)	HP	Yards ³ / Hour	Hydraulic Oil	
					Pressure (PSI)	Flow (GPM)
Growler 1000-6-321-124-40	250	132	40	18	3400	21
	321	124		23		
	382	116		28		
Growler 1000-6-440-97-30	308	106	30	22	2500	21
	440	97		32		
	528	87		39		
Growler 1000-6-440-113-40	308	122	40	22	3400	21
	440	113		32		
	528	103		39		
Growler 1000-6-440-161-50	308	171	50	22	3100	30
	440	161		32		
	528	151		39		
Growler 1000-6-440-193-60	308	206	60	22	3200	35
	440	193		32		
	528	177		39		
Growler 1000-6-660-58-25	462	64	25	64	2500	17
	660	58		58		
	792	48		48		
Growler 1000-6-660-71-30	462	80	30	34	2500	21
	660	71		49		
	792	64		58		
Growler 1000-6-660-97-40	462	106	40	34	3400	21
	660	97		49		
	792	87		58		
Growler 1000-6-660-113-60	462	122	60	34	3200	35
	660	113		49		
	792	103		58		
Growler 1000-6-880-35-22	616	40	22	45	2500	17
	880	35		65		
	1056	28		78		
Growler 1000-6-880-48-30	616	55	30	45	2500	21
	880	48		65		
	1056	43		78		
Growler 1000-6-880-80-40	616	87	40	45	3400	21
	880	80		65		
	1056	71		78		
Growler 1000-6-880-97-60	616	106	60	45	3200	35
	880	97		65		
	1056	87		78		
Growler 1000-6-880-145-100	616	154	100	45	4100	45
	880	145		65		
	1056	135		78		
Growler 1000-6-880-161-100	616	171	100	45	4100	45
	880	161		65		
	1056	151		78		
Growler 1000-6-880-193-125	616	206	125	45	3950	55
	880	193		65		
	1056	177		78		
Growler 1000-6-1100-64-40	770	73	40	87	3400	21
	1100	64		81		
	1320	57		98		
Growler 1000-6-1100-113-75	770	122	75	87	3950	35
	1100	113		81		
	1320	103		98		

Pump Curve



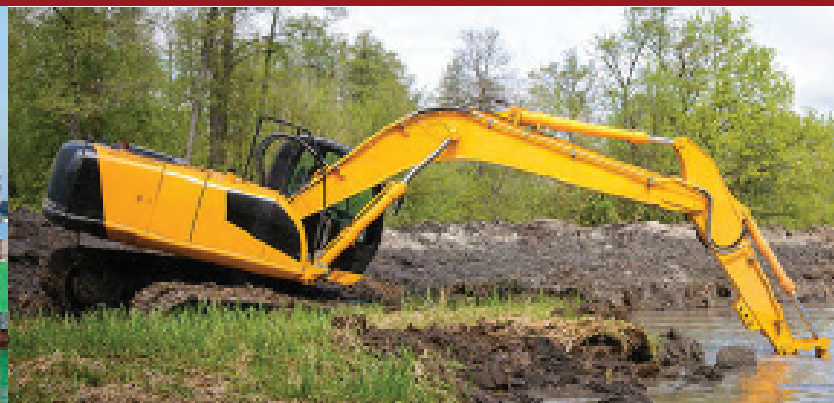
Side Agitators

Power Options	Hydraulic Oil	
	Pressure (PSI)	Flow (GPM)
5 HP	2900	7
7.5 HP	3190	8
10 HP	3200	8
15 HP	3625	8
20 HP	4061	10

Cable Deployed Dredge Pump



Excavator Mounted Dredge Pump



VISIT SITE NOW >>

[VISIT SITE NOW >>](#)

HYDRAULIC SLURRY PUMPS

Durable Hydraulic slurry pumps. Versatile and rugged solution for the transfer of abrasive and high-density slurries in mining, civil construction, industry, and other heavy-duty applications.

Versatile Heavy Duty Solution

Growler 1000 series are heavy-duty, hydraulic submersible slurry pumps designed to handle a wide range of slurries and abrasive particles in submersible applications in mining and industry.

Growler pumps feature a rugged construction using the highest quality materials to ensure reliable performance and excellent service life. The high-quality hydraulic motors incorporate multiple protection features to detect the ingress of water or excessive temperatures to shut off the pump and prevent damage.

Large Cut Water Clearance

The pump casing features a large cut water clearance which allows the easy passage of large solids and reduces wear and erosion to improve service life and prevent loss of efficiency.

Integral Agitator

The 27% chrome white iron agitator assists in pumping slurries by breaking up large particles and agitating high concentrations of solids.

Heavy Duty Construction

The pump casing, impeller, backplate, and agitator are manufactured from high-quality 27% chrome white iron. This extremely tough construction material can withstand continuous use in heavy-duty applications and allows the pump to transfer abrasive and dense slurries with minimal wear. The pumps feature a replaceable back plate allowing for simple servicing and easy replacement of worn components.

Motor Insulation

Motor insulation is used to ensure reliable operation in heavy-duty applications in temperatures up to +70 °C.

Support Frame and Strainer

A heavy-duty mild steel frame with a round base and strainer provides excellent stability and durability whilst preventing blockages.



Double Mechanical Seal

A double mechanical seal provides excellent shaft sealing between the hydraulic motor and the wet end. The seals are oil bath lubricated and feature carbon/ceramic seal faces in the wet end and tungsten ceramic faces in the drive end to provide excellent durability and service life across a wide range of duties and applications.

Oil Chamber Leakage Probe

The oil chamber incorporates a water leakage probe which detects when the water-to-oil ratio is too high and automatically shuts down the motor to prevent damage.

Motor Float Switch

A float switch is located in the bottom of the motor to detect the ingress of water and shut down the motor to prevent damage due to shorting out.

Motor Temperature Sensors

Temperature sensors are located in the motor stator to detect excessive temperatures and can shut down the motor to prevent damage due to overheating.

Thrust Bearing Sensors

Temperature and moisture sensors are located in the motor thrust bearings to detect excessive temperatures and the ingress of water and shut down the motor to prevent bearing failure.

Optional External Cooling

Cooling jackets can be provided with an external water supply in high-temperature applications to keep the motor temperature down and prevent excessive stator and bearing damage.

[VISIT SITE NOW >>](#)