



DAE Pumps

Designed And Engineered Pumping Solutions

VISIT SITE NOW »

Growler 1000

**8-in Hydraulic Dredge Pump
with 2 Side Agitators**



DAEPUMPS.COM

info@daepumps.com

(760) 821-8112

[VISIT SITE NOW >>](#)

GROWLER 1000 8-in Hydraulic Dredge Pump with 2 Side Agitators

The DAE Pumps Growler 1000 Hydraulic Dredge Pump with 2 Side Agitators is a highly durable and reliable dredge pump for transporting solids and a variety of other materials.

Built with two heavy-duty excavator-grade agitators. The industry's top dredge pump can move up to 78-254 cubic yards of solids per hour between 1056 to 3432 GPM. The DAE Pumps Growler 1000 provides non-clogging suction power to excavate and pump some of the most challenging dredging situations.

The suction power of the mighty pump can handle solids up to 1.75-in moving up to 70% solids by weight through a 8-in discharge.



**8-Inch
Pump**



**1056 - 3432
GPM**



**2 Side
Agitators**



**Solids
Handling
up to 1.75 in**



**Up to 70%
Solids by
Weight**



**Highly
Durable
Abrasion
Resistant**



**Over 185 Ft
Head**



**Interchangeable
Hard Tooth
Cutter Heads**



**Robust Motor
for Strong
Torque**

[VISIT SITE NOW >>](#)

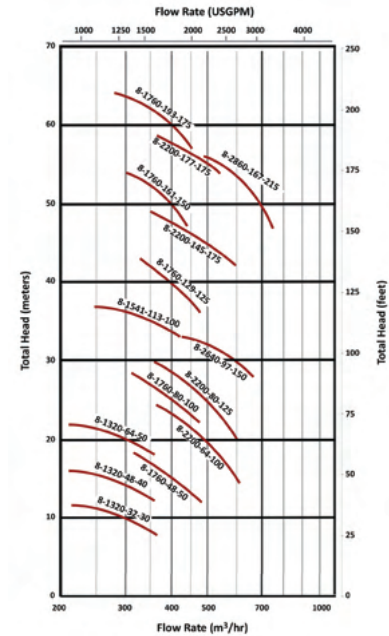
VISIT SITE NOW >>

8-in Growler 1000

Pump Models

Model	GPM	Head (Ft)	HP	Yards ³ / Hour	Hydraulic Oil	
					Pressure (PSI)	Flow (GPM)
Growler 1000-8-1320-32-30	1056	36	30	78	2500	21
	1320	32		98		
	1584	28		117		
Growler 1000-8-1320-48-40	1056	55	40	78	3350	21
	1320	48		98		
	1584	42		117		
Growler 1000-8-1320-64-50	1056	74	50	80	3050	30
	1320	64		98		
	1584	58		117		
Growler 1000-8-1541-113-100	1078	122	100	80	4070	45
	1540	113		114		
	1848	103		137		
Growler 1000-8-1760-48-50	1232	55	50	91	3050	30
	1760	48		130		
	2112	42		156		
Growler 1000-8-1760-80-100	1232	87	100	91	4070	45
	1760	80		130		
	2112	71		156		
Growler 1000-8-1760-129-120	1232	132	120	91	3920	55
	1760	129		130		
	2112	126		156		
Growler 1000-8-1760-161-150	1232	171	150	91	3920	66
	1760	161		130		
	2112	151		156		
Growler 1000-8-1760-193-175	1232	206	175	91	3920	80
	1760	193		130		
	2112	177		156		
Growler 1000-8-2200-64-100	1540	73	100	114	4070	45
	2200	64		163		
	2640	57		196		
Growler 1000-8-2200-80-120	1540	87	120	114	3920	55
	2200	80		163		
	2640	71		196		
Growler 1000-8-2200-145-175	1540	154	175	114	3920	80
	2200	145		163		
	2640	132		196		
Growler 1000-8-2200-177-175	1540	190	175	114	3920	80
	2200	177		163		
	2640	167		196		
Growler 1000-8-2640-97-150	1848	106	150	137	3920	66
	2640	97		196		
	3168	87		235		
Growler 1000-8-2860-167-215	2002	180	215	148	3920	80
	2860	167		212		
	3432	142		254		

Pump Curve



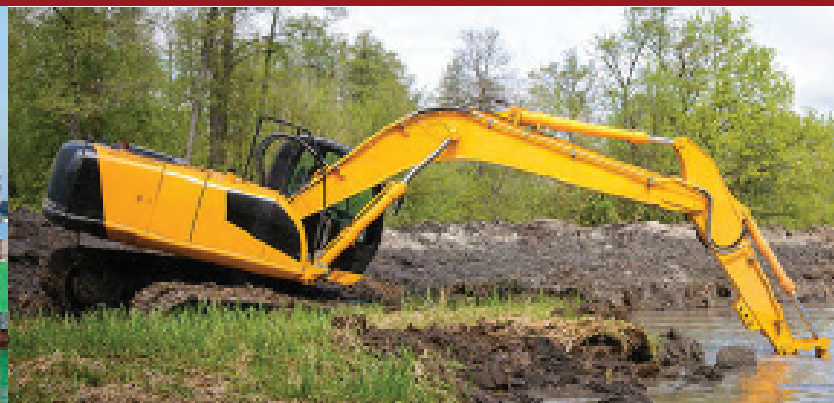
Side Agitators

Power Options	Hydraulic Oil	
	Pressure (PSI)	Flow (GPM)
5 HP	2900	7
7.5 HP	3190	8
10 HP	3200	8
15 HP	3625	8
20 HP	4061	10
30 HP	3625	16

Cable Deployed Dredge Pump



Excavator Mounted Dredge Pump



VISIT SITE NOW >>



VISIT SITE NOW »

HYDRAULIC SLURRY PUMPS

Durable Hydraulic slurry pumps. Versatile and rugged solution for the transfer of abrasive and high-density slurries in mining, civil construction, industry, and other heavy-duty applications.

Versatile Heavy Duty Solution

Growler 1000 series are heavy-duty, hydraulic submersible slurry pumps designed to handle a wide range of slurries and abrasive particles in submersible applications in mining and industry.

Growler pumps feature a rugged construction using the highest quality materials to ensure reliable performance and excellent service life. The high-quality hydraulic motors incorporate multiple protection features to detect the ingress of water or excessive temperatures to shut off the pump and prevent damage.

Large Cut Water Clearance

The pump casing features a large cut water clearance which allows the easy passage of large solids and reduces wear and erosion to improve service life and prevent loss of efficiency.

Integral Agitator

The 27% chrome white iron agitator assists in pumping slurries by breaking up large particles and agitating high concentrations of solids.

Heavy Duty Construction

The pump casing, impeller, backplate, and agitator are manufactured from high-quality 27% chrome white iron. This extremely tough construction material can withstand continuous use in heavy-duty applications and allows the pump to transfer abrasive and dense slurries with minimal wear. The pumps feature a replaceable back plate allowing for simple servicing and easy replacement of worn components.

Motor Insulation

Motor insulation is used to ensure reliable operation in heavy-duty applications in temperatures up to +70 °C.

Support Frame and Strainer

A heavy-duty mild steel frame with a round base and strainer provides excellent stability and durability whilst preventing blockages.



Double Mechanical Seal

A double mechanical seal provides excellent shaft sealing between the hydraulic motor and the wet end. The seals are oil bath lubricated and feature carbon/ceramic seal faces in the wet end and tungsten ceramic faces in the drive end to provide excellent durability and service life across a wide range of duties and applications.

Oil Chamber Leakage Probe

The oil chamber incorporates a water leakage probe which detects when the water-to-oil ratio is too high and automatically shuts down the motor to prevent damage.

Motor Float Switch

A float switch is located in the bottom of the motor to detect the ingress of water and shut down the motor to prevent damage due to shorting out.

Motor Temperature Sensors

Temperature sensors are located in the motor stator to detect excessive temperatures and can shut down the motor to prevent damage due to overheating.

Thrust Bearing Sensors

Temperature and moisture sensors are located in the motor thrust bearings to detect excessive temperatures and the ingress of water and shut down the motor to prevent bearing failure.

Optional External Cooling

Cooling jackets can be provided with an external water supply in high-temperature applications to keep the motor temperature down and prevent excessive stator and bearing damage.

VISIT SITE NOW »