



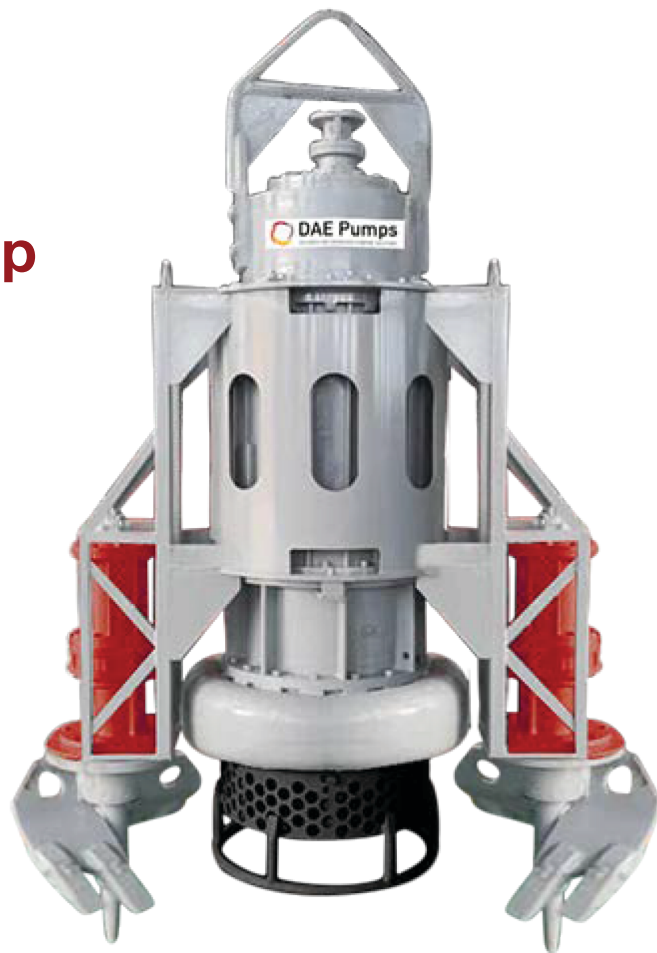
DAE Pumps

Designed And Engineered Pumping Solutions

VISIT SITE NOW >>

Growler 3000

**10-in Electric Dredge Pump
with 2 Side Agitators**



DAEPUMPS.COM

info@daepumps.com

(760) 821-8112

[VISIT SITE NOW >>](#)

GROWLER 3000 10-in Electric Dredge Pump with 2 Side Agitators

The DAE Pumps Growler 3000 Electric Dredge Pump with 2 Side Agitators is a highly durable and reliable dredge pump for transporting solids and a variety of other materials.

Built with two heavy-duty excavator-grade agitators. The industry's top dredge pump can move up to 114-235 cubic yards of solids per hour between 1540 to 3168 GPM. The DAE Pumps Growler 3000 provides non-clogging suction power to excavate and pump some of the most challenging dredging situations.

The suction power of the mighty pump can handle solids up to 1.75-in moving up to 70% solids by weight through a 10-in discharge.



10-Inch
Pump



1540 - 3168
GPM



2 Side
Agitators



Solids
Handling
up to 1.75 in



Up to 70%
Solids by
Weight



Highly
Durable
Abrasion
Resistant



Over 185 Ft
Head



Interchangeable
Hard Tooth
Cutter Heads



Robust Motor
for Strong
Torque

[VISIT SITE NOW >>](#)



VISIT SITE NOW >>

10-in Growler 3000 Pump Models

Model	GPM	Head (Ft)	HP	Yards ³ /Hour
Growler 3000-10-2200-48-60	1540	55	60	114
	2200	48		163
	2640	42		196
Growler 3000-10-2640-48-75	1848	55	75	137
	2640	48		196
	3168	42		235
Growler 3000-10-2640-177-265	1848	190	265	137
	2640	177		196
	3168	167		235

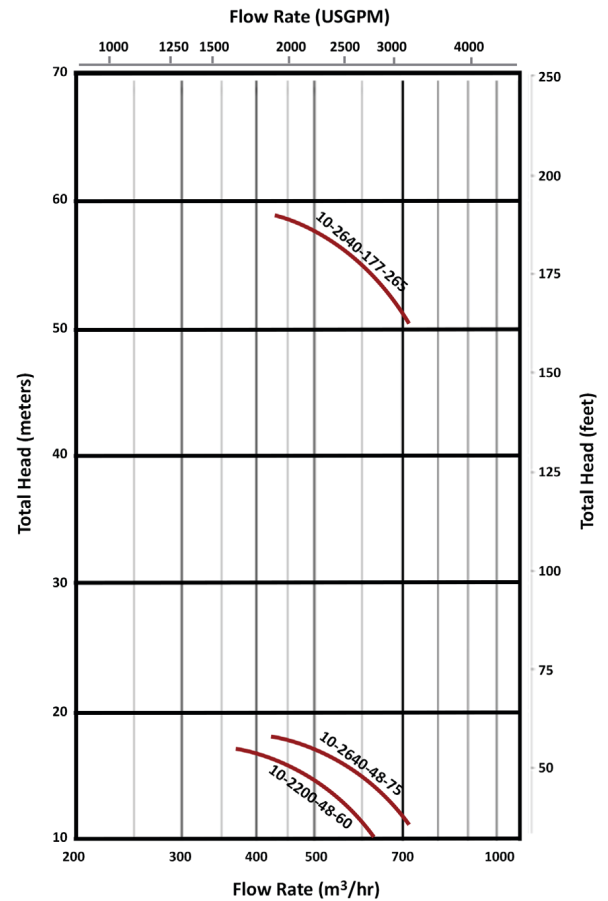
Side Agitators

Available in Multiple Powers Options

5 HP / 7.5 HP

10 HP / 15 HP / 20 HP

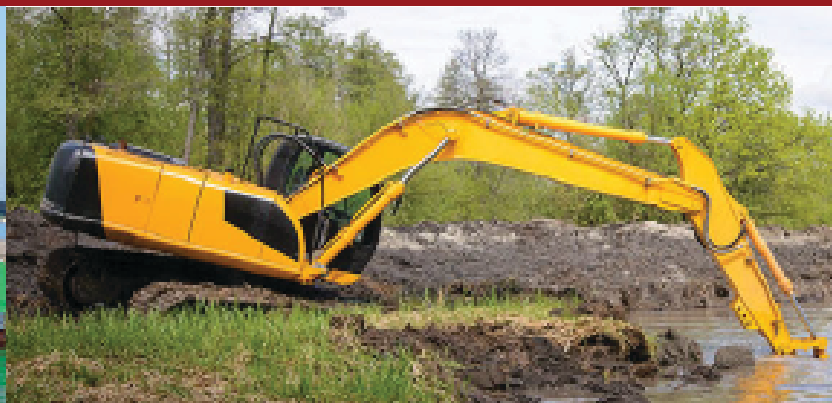
Pump Curve



Cable Deployed Dredge Pump



Excavator Mounted Dredge Pump



VISIT SITE NOW >>



VISIT SITE NOW »

ELECTRIC SLURRY PUMPS

Durable Electric slurry pumps. Versatile and rugged solution for the transfer of abrasive and high-density slurries in mining, civil construction, industry, and other heavy-duty applications.

Versatile Heavy Duty Solution

Growler 3000 series are a heavy-duty, electric submersible slurry pumps designed to handle a wide range of slurries and abrasive particles in submersible applications in mining and industry.

Growler pumps feature a rugged construction using the highest quality materials to ensure reliable performance and excellent service life. The high-quality electric motors incorporate multiple protection features to detect the ingress of water or excessive temperatures to shut off the pump and prevent damage.

Large Cut Water Clearance

The pump casing features a large cut water clearance which allows the easy passage of large solids and reduces wear and erosion to improve service life and prevent loss of efficiency.

Integral Agitator

The 27% chrome white iron agitator assists in pumping slurries by breaking up large particles and agitating high concentrations of solids.

Heavy Duty Construction

The pump casing, impeller, backplate, and agitator are manufactured from high-quality 27% chrome white iron. This extremely tough construction material can withstand continuous use in heavy-duty applications and allows the pump to transfer abrasive and dense slurries with minimal wear. The pumps feature a replaceable backplate allowing for simple servicing and easy replacement of worn components.

Motor Insulation

Motor insulation is used to ensure reliable operation in heavy duty applications in temperatures up to +70 °C.

Support Frame and Strainer

A heavy-duty mild steel frame with a round base and strainer provides excellent stability and durability whilst preventing blockages.



Double Mechanical Seal

A double mechanical seal provides excellent shaft sealing between the electric motor and the wet end. The seals are oil bath lubricated and feature carbon/ceramic seal faces in the wet end and tungsten ceramic faces in the drive end to provide excellent durability and service life across a wide range of duties and applications.

Oil Chamber Leakage Probe

The oil chamber incorporates a water leakage probe which detects when the water-to-oil ratio is too high and automatically shuts down the motor to prevent damage.

Motor Float Switch

A float switch is located in the bottom of the motor to detect the ingress of water and shut down the motor to prevent damage due to shorting out.

Motor Temperature Sensors

A float switch is located in the bottom of the motor to detect the ingress of water and shut down the motor to prevent damage due to shorting out.

Thrust Bearing Sensors

Temperature and moisture sensors are located in the motor thrust bearings to detect excessive temperatures and the ingress of water and shut down the motor to prevent bearing failure.

Optional External Cooling

Cooling jackets can be provided with an external water supply in high-temperature applications to keep the motor temperature down and prevent excessive stator and bearing damage.

VISIT SITE NOW »

