



**DAE Pumps**

Designed And Engineered Pumping Solutions

**VISIT SITE NOW >>**

# Gulfport D860S

## Submersible Drainage Pump



**DAEPUMPS.COM**

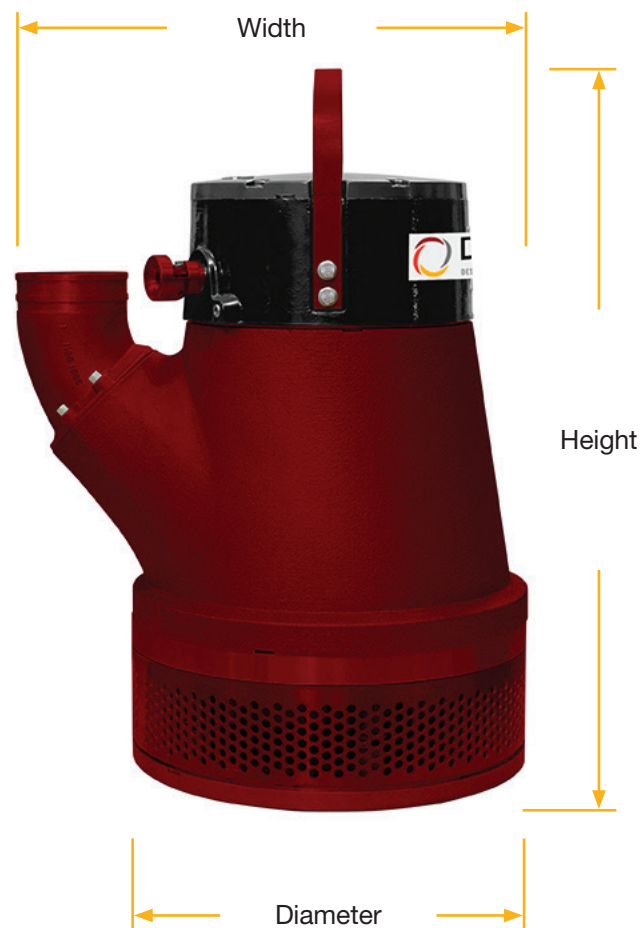
info@daepumps.com

(760) 821-8112

## PRODUCT REFERENCE SHEET

The **Gulfport D860S Submersible Drainage Pump** handle either clean or sand-laden water, even with small solid particles, with the best performance and efficiency. These pumps are designed with robustness, sustained performance and ease-of-maintenance in mind. Suitable for general dewatering applications, ground water, raw water, construction sites and harsh conditions on site.

Product code	Gulfport D860S
Installation	Portable drainage pump
Hydraulic range	N - normal head
Insulation class	H (+180 °C / +356 °F) IEC 85 (VFD-ready)
Protection class	IP 68
Voltage variation	Max ± 5% of nominal voltage
Voltage imbalance	Max 2% - between phases
Max start-stop	Max 30 starts/hour
Cable	H07RN-F (20 m) / SOOW AWG (65 ft)
Casted parts	Corrosion resistant aluminum
Impeller	High chrome iron, 55±5 HRC
Wear parts	Rubber (NBR)
Strainer	Corrosion resistant aluminum
Shaft	Stainless steel
O-rings	Rubber (NBR)
Main bearing	Double row ball bearing, pregreased
Mechanical seal	Cartridge-type, primary + secondary: SiC/SiC
Built-in controls and protection	Contactor + control relay + overload relay
Thermal contacts	140 °C / 284 °F
Options / accessories	Float switch Zinc anodes Epoxy coating Quick couplings (hose / NPT / ISO-G / Camlock / Storz) Pump raft NSSHÖU screened cable Terminal board Softstarter



Rating	3 pH	Std cable
Power P <sub>1</sub>	26 kW	
Power P <sub>2</sub>	31 Hp	
Shaft speed	3500 rpm	
460 V	38 A	AWG 6
575 V	29 A	AWG 8

Other voltages on request

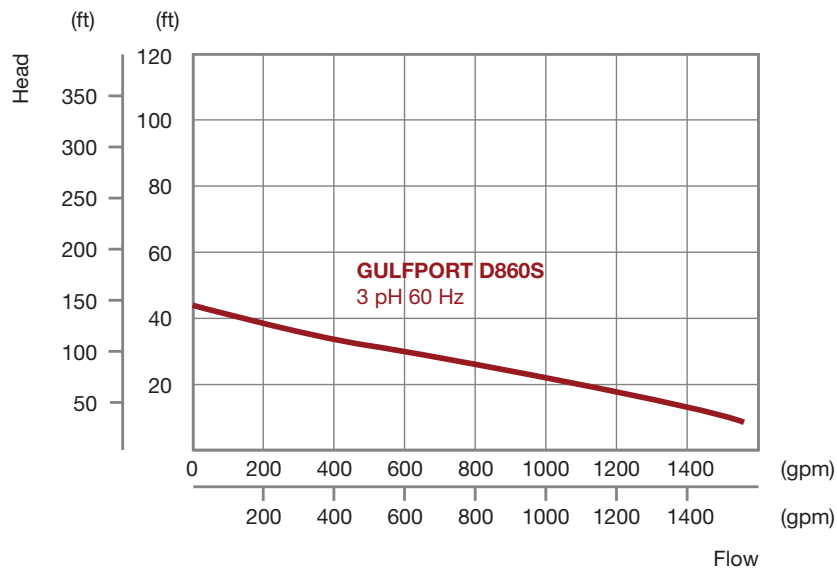


**VISIT SITE NOW >>**

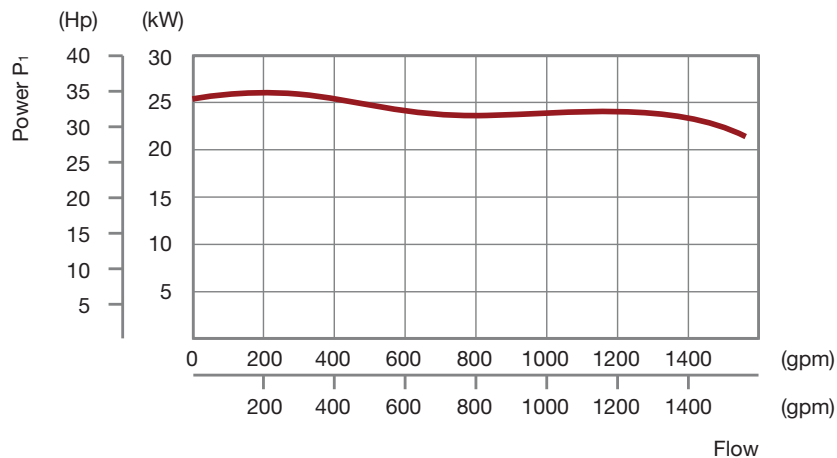
Product code	Gulfport D860S
Solids handling, strainer hole	0.47 in
Liquid temperature	Max 104 °F
Depth of immersion	Max 65 ft
Max liquid specific gravity	1.1
pH of the pumped liquid	5 pH – 8 pH

Weight and dimensions	N - Normal head
Discharge connection	6 in
Height	38.6 in
Width	27.2 in
Diameter	20.9 in
Weight (excl. cable)	390 lb

## PERFORMANCE CURVE



## POWER RATING



**VISIT SITE NOW >>**