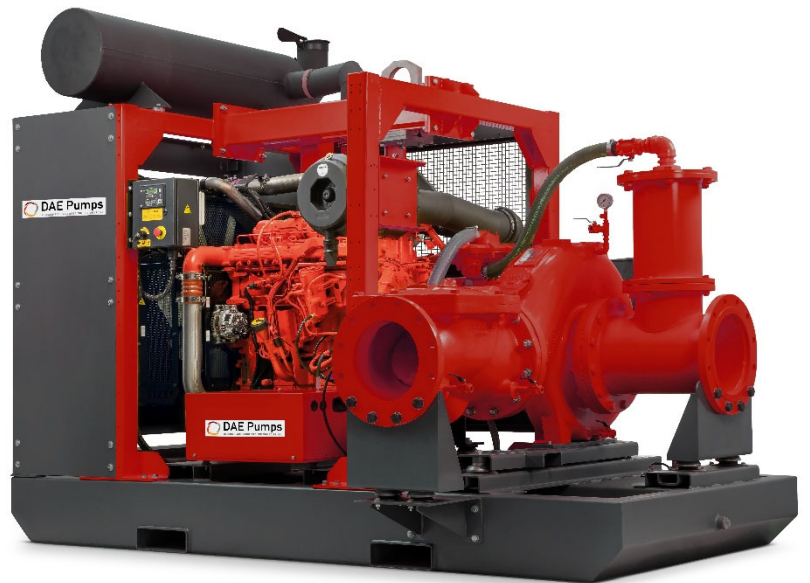


Appalachian 120

Self-Priming Surface Pump



DAEPUMPS.COM

info@daepumps.com

(760) 821-8112



Benefits

- Pump:** High efficiency: 72% (B.E.P.)
- Rapid “dry” priming:** Up to a height of 24.6 ft (7.5 m)
- High resistance:** To abrasive liquids and turbid sandy waters
- Semi-open impeller:** Solids handling up to 3.5” (89 mm)
- Diaphragm vacuum pump:** Oil free suitable for dry running: no contamination of the environment
- Mechanical shaft seal in oil bath:** It allows the “dry running” operation of the pump

Appalachian 120 – Self-Priming Surface Pumps

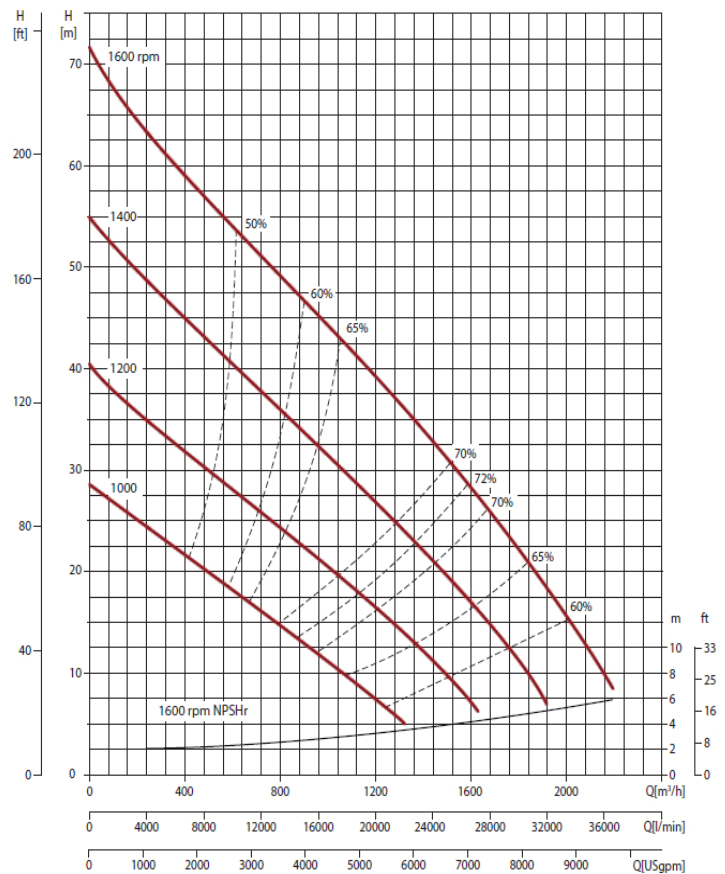
The pump system consists of a centrifugal pump and a separator, which enables air to be separated from the liquid and be sucked by a vacuum pump - making automatic priming possible. Even with suction heights of several meters the machine rapidly evacuates the air from the suction pipe and starts to pump. Additionally, thanks to the semi-open impeller, the Appalachian range is also suitable for pumping liquids with solids in suspension.

Applications

DAE Pumps has decades of experience in designing and producing pumps. We have put those years of expertise into providing a solutions portfolio that works across multiple applications. The Appalachian range is packed with features that not only meet but exceed the needs of the market. We are focused on an efficient, extremely versatile pump that is suitable for many industries, including construction, general dewatering and emergency applications, such as flood clean up.

Test according to UNI EN ISO 9906 standard - level 2
 Priming time: 30 s from 4.9 ft (1.5 m)
 Test liquid: clean water, density 1,000 kg/m³
 Max absorbed power: 195.0 kW - 261.5 HP (1,600 rpm)
 Spherical solids handling: D. 3.5” (89 mm)

Performance Curve



Technical data

Pump

Model	Appalachian 120
Qmax	2,160 m ³ /h – 36,000 l/min (9,510 GPM)
Hmax	71 m (233 ft)
Q max eff.	1,580 m ³ /h – 26,330 l/min (6,960 GPM)
Eff. max	72 %
Suction port	Flanged - ANSI 300
Delivery port	Flanged - ANSI 300
Impeller type	Semi-Open, 2 vane
Solids handling	89 mm (3.5 ")
Material	G11
Casing	ASTM A536 ductile iron
Impeller	ASTM A536 ductile iron
Wear plates	ASTM A48 Class 20 cast iron
Number of plates	1
Shaft	AISI 630 stainless steel
Mechanical seal	Silicon carbide / Tungsten carbide
Elastomers	VITON

Priming system

Vacuum pump	V22
Vacuum pump type	Diaphragm
Nominal air capacity	85 m ³ /h (50.0 cfm)
Max vacuum	0.9 bar (13.1 psi – 26.6 inHg)
Separator type	-
Separator material	EN-GJL-200 cast iron
Drives	Link belt

Engine

Make	Perkins			
Model	TAD872VE			
Type	Diesel turbo common rail			
Displacement	7,700 cm ³ (470 in ³)			
No. cylinders	6			
Cooling	Liquid with radiator			
Rpm type	Variable			
Standard speed	1,600 rpm			
US emissions	EPA Tier 4F			
Starting	Electric			
Starting voltage	24 V			
Oil change interval	500 h			
Speed [rpm]	1000	1200	1400	1600
Power [kW]*	112.8	155.1	183.3	206.8
Power [HP]	151.2	207.9	245.7	277.2

* continuous power ISO 3046 ICXN

Control panel

Model	PW 750
Manual operation	
Automatic operation: start-stop with transducers or floats	
Digital display with 6 languages (EN, SV, FR, DE, ES, IT) with:	
Hour meter, Rev counter, Liquid temperature, Oil pressure and temperature	
Battery voltmeter, Fuel Level (%) and consumption (l/h)	
Automatic engine shutdown in case of:	
- low oil pressure	
- engine overheating	
- low battery voltage	
(engine failure alarms with LED lights and display message)	
Service time (hours)	
Emergency stop button	
Push-button accelerator (up/down)	
(PW1 FleetLink control as option)	

Arrangement

Technical data	
Material	ASTM A36 steel
Coatings	Epoxy powder, average thickness of 3 MIL
Battery	Acid charge Pb-Ca maintenance free, 12 V – 100 Ah – 400 A
Tank	450 (119 USG)
Drip pan	495 (131 USG) (110% of the total volume of the tank)
Locking keys	Control panel door and canopy doors
Noise level	67-72 dB(A) @10 m (32 ft)
Fuel consumption	10 US Gal/hr @1600 rpm @BEP

Dimensional	
Dimensions	1940 x 3250 x 2155 mm 76" x 128" x 85"
H suction port	0.7 m (2.3 ft)
Dry weight	3,700 kg (8,160 lbs)