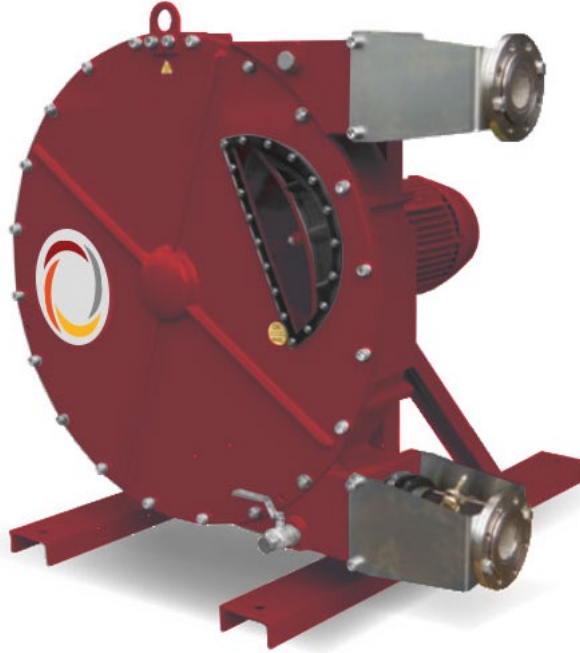


CREST40

Open Flow Pumps



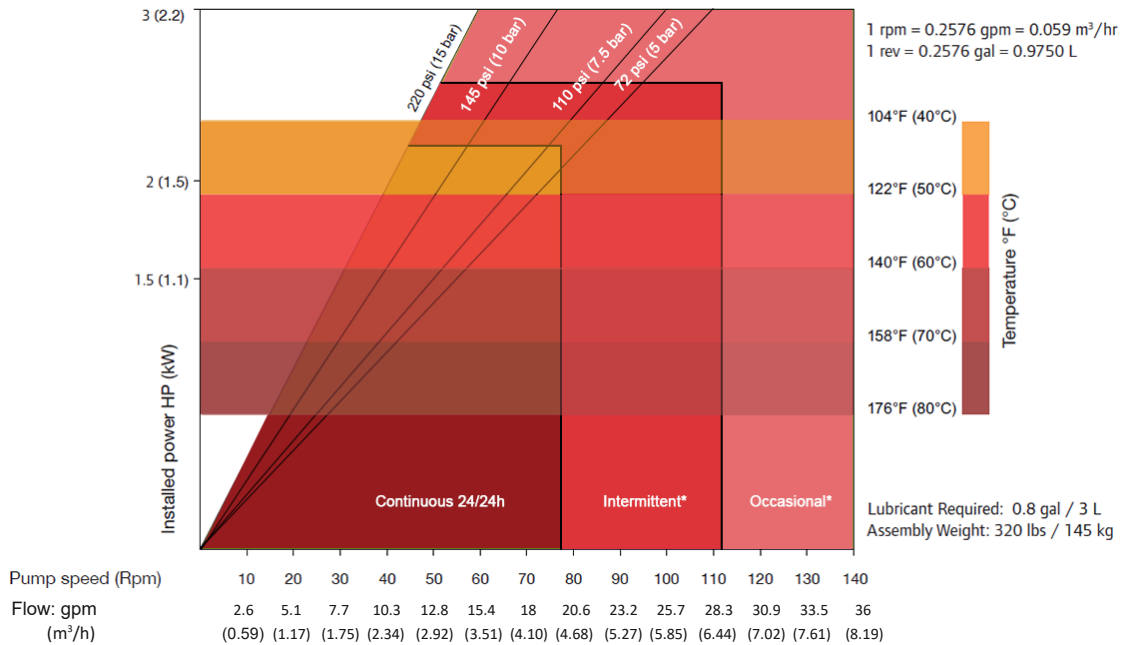
DAEPUMPS.COM

info@daepumps.com

(760) 821-8112

CREST40

Data Sheet



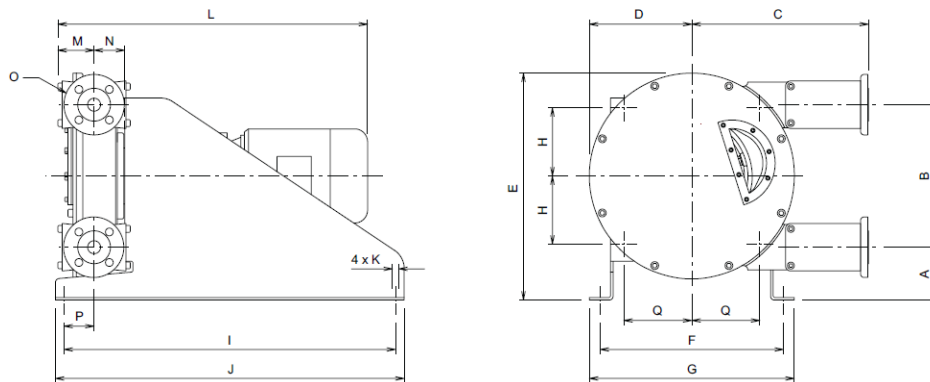
*Intermittent use : minimum one hour stop after 2 hours run / *Occasional use : maximum one hour a day

SHOE SHIMMING TABLE - CREST40		
Pressure psi (bar)	Speed - Rpm	Number of shims* - thickness 0.019 in (0.5 mm)
$\Delta P \leq 72.5$ (5)	0 to 40	0
	40 to 160	0
72.5 (5) $\leq \Delta P \leq 108.75$ (7.5)	0 to 40	2
	40 to 125	1
108.75 (7.5) $\leq \Delta P \leq 145$ (10)	0 to 40	3
	40 to 105	2
145 (10) $\leq \Delta P \leq 217.5$ (15)	0 to 40	4
	40 to 90	3

*Remove one shim if temperature exceeds 140° Fahrenheit (60° Celsius)

DIMENSIONS

Inch (mm)



TYPE	A	B	C	D	E	F	G	H	I	J	K	L	M	N	O	P	Q
CREST40	4.8 (121)	13.0 (330)	17.2 (438)	9.3 (237)	20.6 (524)	16.7 (424)	18.7 (474)	6.2 (158)	30.3 (770)	31.5 (800)	4xø0.5 (4xø13)	-	3.3 (85)	2.9 (75)	ANSI 1.5 in / 150# DN40 PN16	3.6 (91.5)	6.2 (158)