

# H860 / V860

## Flooded Suction Pumps



**DAEPUMPS.COM**

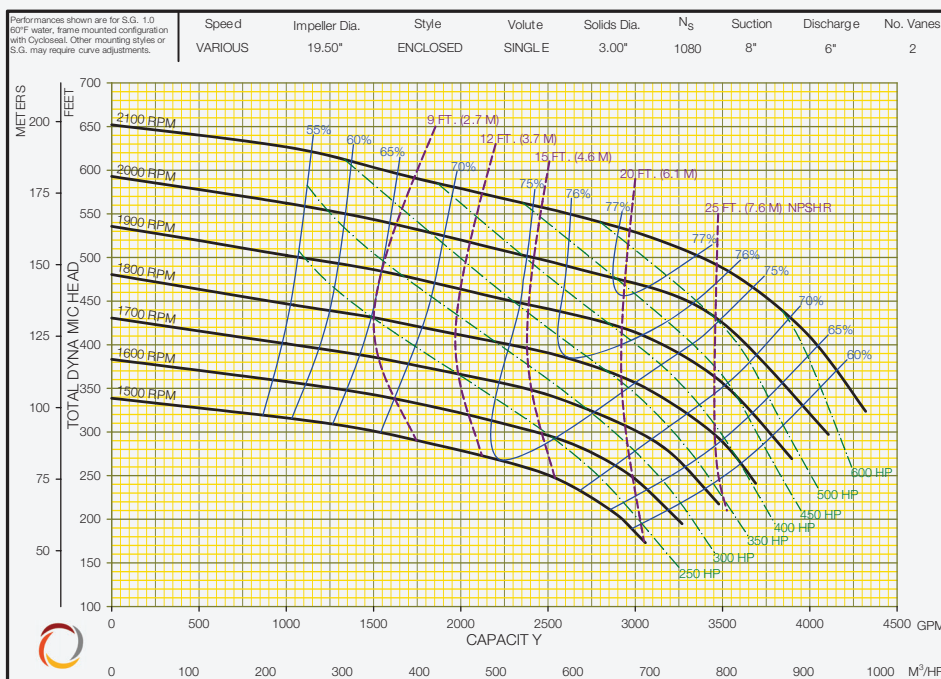
info@daepumps.com

(760) 821-8112

# H860 / V860 Flooded Suction Pump

OPERATING LEVELS		
MIN FLOW	850 GPM	193.1 m <sup>3</sup> /h
MAX FLOW	4325 GPM	982.3 m <sup>3</sup> /h
DISCHARGE SIZE	6"	152.4 mm
SUCTION SIZE	8"	203.2 mm
SOLIDS HANDLING	3"	76.2 mm
MAX SPEED	2100 RPM	2100 RPM
SHUT-OFF HEAD	651'	198.4 m
BEP HEAD	520'	158.5 m
BEP FLOW	3125 GPM	709.8 m <sup>3</sup> /h
BEP PERCENT	77%	77%

PARTS	HYBRID	HIGH CHROME
IMPELLER	CHROME IRON	CHROME IRON
VOLUTE	DUCTILE IRON	CHROME IRON
SHAFT	17-4 P.H. STAINLESS STEEL	17-4 P.H. STAINLESS STEEL
SHAFT SLEEVE	416 STAINLESS STEEL CHR. PLATED	416 STAINLESS STEEL CHR. PLATED
SUCTION COVER	DUCTILE IRON	DUCTILE IRON
BACKPLATE	DUCTILE IRON	CHROME IRON
WEAR PLATE	CHROME IRON	CHROME IRON
MECHANICAL SEAL	TUNGSTEN CARBIDE VS. SILICON CARBIDE	TUNGSTEN CARBIDE VS. SILICON CARBIDE
BEARING FRAME	CAST IRON	CAST IRON
O-RINGS	VITON	VITON



## FEATURES

- Heavy-duty construction
- Enclosed impeller for higher efficiency
- Flow rates up to 4325 GPM / Heads up to 650'
- Handles solids up to 3"
- Hardness > 600BHN wears better than standard cast iron
- RunDry™ option (Indefinite run dry capability)
- Heavy-duty bearing frame
- Patented Cyclo Seal® design
- Redi-Prime® available for fully-automatic continuous priming
- Replaceable wear plate